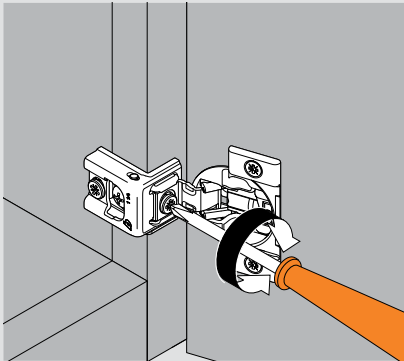
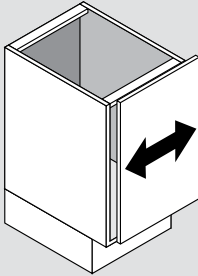


## Door adjustment

### Three-dimensional adjustment

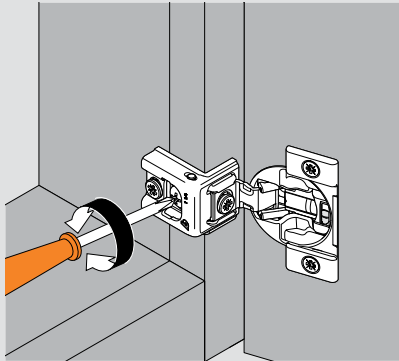
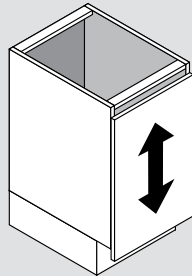
#### Side adjustment

Rotate the front cam screw to increase or decrease door overlay (+/- 1/16").



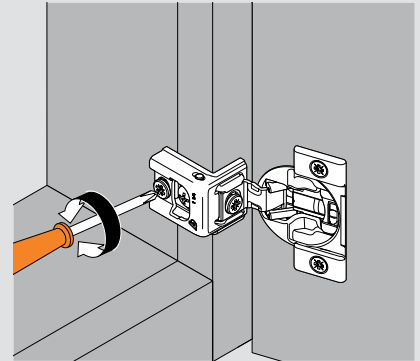
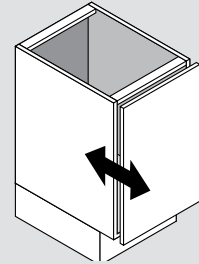
#### Height adjustment

Loosen installation screws to adjust door position (+/- 1/8"), then retighten.



#### Depth adjustment

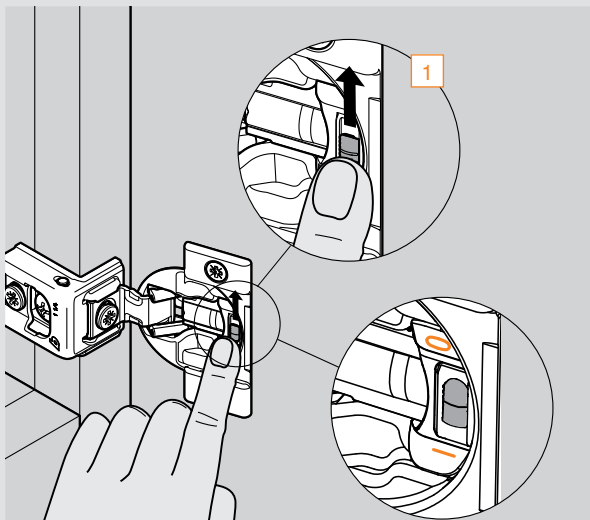
Rotate the rear cam screw to adjust door gap (+ 3/32", - 1/32").



## BLUMOTION deactivation

### Switch on the hinge cup

For small or light doors, the BLUMOTION can be deactivated on one of the hinges. COMPACT BLUMOTION comes in the activated position, marked with a "1". The deactivated position is marked with a "0".



Door must be closed once for the deactivation to be complete. To reactivate, move switch back to the original position "1".

